



March 17, 2020

Mr. Alan Montanelli  
City of Stockton Municipal Utilities Department  
2500 Navy Dr.  
Stockton CA 95206

Dear Alan:

**Subject: Arch Road Industrial Park  
Storm Drainage Basin Maintenance District**

On behalf of Siegfried Engineering, Inc., Engineer of Work for the subject maintenance district, I am submitting the following documents for the subject Maintenance District:

1. Proposed 2020-2021 Fiscal Year Budget.
2. Schedule of parcels and assessment amounts for the 2020-2021 budget and a list of the description of parcels by Assessor Parcel Number (A.P.N.).
3. Amendment No. 9 to the Amended Assessment Diagram for Arch Road Industrial Park Storm Drainage Basin Maintenance District.

The submittal appropriately addresses the requirements of Proposition 218 in that the parcels within the subject district receive one hundred percent (100%) of special benefits from the subject district and zero percent (0%) of general benefits.

Sincerely,  
**SIEGFRIED**

A handwritten signature in blue ink, appearing to read "Paul J. Schneider", is written over a horizontal line.

Paul J. Schneider, P.E.

PJS/jh

Enclosure

cc: Mr. Kevin Beltz, City of Stockton, Finance Department (w/ encl.)  
City of Stockton, City Clerk's Office (w/ encl.)



**Stockton**  
3428 Brookside Rd.  
Stockton, CA 95219  
t: 209.943.2021

**San Jose**  
111 N. Market St., #300  
San Jose, CA 95113  
t: 408.754.2021

**Sacramento**  
900 Howe Ave #200  
Sacramento, CA 95825  
t: 916.520.2777

**Modesto**  
100 Sycamore Ave, #100  
Modesto, CA 95354  
t: 209.762.3580

**ARCH ROAD INDUSTRIAL PARK  
STORM DRAINAGE BASIN MAINTENANCE DISTRICT  
PROPOSED 2020-2021 FISCAL YEAR BUDGET**

---

Inspection, Maintenance & Graffiti Control	\$14,850.00
Fence Repairs	\$3,500.00
<b>Operational Costs</b>	<b>\$18,350.00</b>

City of Stockton Publicity and Advertising Costs	\$85.00
Maintenance District Attorney Fee	\$1,433.00
San Joaquin County Processing Fees	\$165.00
District Engineering Annual Engineer's Report	\$2,119.00
Professional Services	\$0.00
City of Stockton Administrative Costs	\$3,500.00
<b>Total Administrative Costs</b>	<b>\$7,302.00</b>

Contingency	\$2,215.00
<b>Total 2020-2021 Budget</b>	<b>\$27,867.00</b>

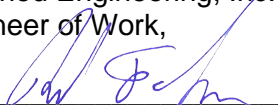
Amount allocated from reserve \$10,494.00

**Amount to be assessed by  
Arch Road Industrial Park \$17,373.00**

The improvements being maintained by this district are a storm water retention basin and appurtenances which are site specific to the parcels being assessed. The improvements and appurtenances do not provide any benefit to any parcel or parcels outside the boundaries of the district. In the opinion of the undersigned, the benefits received by the parcels assessed within the Arch Road Industrial Park, Storm Drain Maintenance District, from the Arch Road Industrial Park, Storm Basin Maintenance District, are identified as set forth by Proposition 218 as follows:

**Special Benefits - 100%**  
**General Benefits - 0%**

Siegfried Engineering, Inc.  
Engineer of Work,

  
\_\_\_\_\_  
Paul J. Schneider, P.E.

3/17/2020  
\_\_\_\_\_  
Date

Arch Road Industrial Park  
Storm Drainage Basin Maintenance District

**SCHEDULE OF PARCELS, ADJUSTED DRAINAGE AREAS and  
ASSESSMENT AMOUNTS FOR 2020-2021 BUDGET**

March 17, 2020

Maintenance District Assessment Number	Assessor's Parcel Number	Adjusted Area (acres)	2020-2021 Assessment Amount
4	179-250-01	3.22	\$338.81
5	179-250-02	3.65	\$384.06
6	179-260-51	1.41	\$148.35
11	179-250-29	5.67	\$596.60
12	179-250-31	8.63	\$908.06
13	179-250-32	7.17	\$754.43
14	179-250-33	3.22	\$338.81
18	179-250-38	7.67	\$807.04
19	179-250-39	3.97	\$417.73
20	179-250-40	3.97	\$417.73
21	179-250-41	10.47	\$1,101.66
22	179-260-01	3.26	\$343.02
23	179-260-02	4.80	\$505.06
29	179-260-08	2.70	\$284.10
30	179-260-09	2.70	\$284.10
31	179-260-10	2.70	\$284.10
33	179-260-12	2.70	\$284.10
34	179-260-13	1.74	\$183.08
35	179-260-14	1.62	\$170.46
36	179-260-17	2.50	\$263.05
37	179-260-18	2.50	\$263.05
42	179-260-39	1.76	\$185.19
43	179-260-40	1.83	\$192.55
44	179-260-41	1.57	\$165.20
45	179-260-42	1.39	\$146.26
46	179-260-43	1.73	\$182.03
47	179-260-44	0.94	\$98.91
52	179-250-03	3.18	\$334.60
53	179-250-04	2.81	\$295.67
54	179-250-05	2.83	\$297.77
55	179-250-42	2.58	\$271.47
56	179-250-43	9.44	\$993.28
57	179-250-44	1.61	\$169.41

Arch Road Industrial Park  
Storm Drainage Basin Maintenance District

**SCHEDULE OF PARCELS, ADJUSTED DRAINAGE AREAS and  
ASSESSMENT AMOUNTS FOR 2020-2021 BUDGET**

March 17, 2020

Maintenance District Assessment Number	Assessor's Parcel Number	Adjusted Area (acres)	2020-2021 Assessment Amount
58	179-250-45	1.61	\$169.41
62	179-480-04	2.51	\$264.10
63	179-480-05	1.07	\$112.59
64	179-480-06	2.94	\$309.35
65	179-480-07	1.87	\$196.76
66	179-260-52	1.13	\$118.90
67	179-260-53	1.01	\$106.27
68	179-260-54	2.05	\$215.70
69	179-260-55	2.07	\$217.81
70	179-260-56	4.83	\$508.22
72	179-260-58	4.00	\$420.88
73	179-260-59	1.77	\$186.24
74	179-480-08*	0.72	\$75.76
75	179-480-09	1.83	\$192.55
76	179-480-10	1.02	\$107.33
77	179-480-11	1.20	\$126.26
78	179-260-60	0.91	\$95.75
79	179-260-61	0.91	\$95.75
80	179-260-62	0.88	\$92.59
81	179-260-63	12.84	\$1,351.04
		165.11	\$17,373.00

\* - Indicates parcel to be hand billed

DO NOT SEND PARCELS REQUIRING SEPARATE BILLING TO COUNTY AUDITOR

FILED IN THE OFFICE OF THE CITY CLERK OF THE CITY OF STOCKTON  
THIS \_\_\_\_ DAY OF \_\_\_\_\_, 20\_\_.

CITY CLERK OF THE CITY OF STOCKTON

RECORDED IN THE OFFICE OF THE SUPERINTENDENT OF THE STREETS  
THIS \_\_\_\_ DAY OF \_\_\_\_\_, 20\_\_.

SUPERINTENDENT OF THE STREETS OF THE CITY OF STOCKTON

AN ASSESSMENT WAS LEVIED BY THE CITY COUNCIL OF THE CITY OF STOCKTON, COUNTY OF SAN JOAQUIN, STATE OF CALIFORNIA, ON THE LOTS, PIECES AND PARCELS OF LAND SHOWN ON THE ASSESSMENT DIAGRAM. SAID ASSESSMENT WAS LEVIED ON THE 24TH DAY OF JULY, 2007. SAID ASSESSMENT DIAGRAM AND THE ASSESSMENT ROLL WERE RECORDED IN THE OFFICE OF THE SUPERINTENDENT OF STREETS OF SAID CITY ON THE 7TH DAY OF AUGUST, 2007. REFERENCE IS MADE TO THE ASSESSMENT ROLL RECORDED IN THE OFFICE OF THE SUPERINTENDENT OF STREETS FOR THE EXACT AMOUNT OF EACH ASSESSMENT LEVIED AGAINST EACH PARCEL OF LAND SHOWN ON THIS ASSESSMENT DIAGRAM.

CITY CLERK OF THE CITY OF STOCKTON

FILED THIS \_\_\_\_ DAY OF \_\_\_\_\_, 20\_\_, AT THE HOUR OF \_\_\_\_:  
O'CLOCK, \_\_\_\_M. IN BOOK \_\_\_\_ OF MAPS OF ASSESSMENT DISTRICTS AT  
PAGE \_\_\_\_ IN THE OFFICE OF THE COUNTY RECORDER OF THE  
COUNTY OF SAN JOAQUIN, STATE OF CALIFORNIA.

COUNTY RECORDER, COUNTY OF SAN JOAQUIN, STATE OF CALIFORNIA

NOTES:

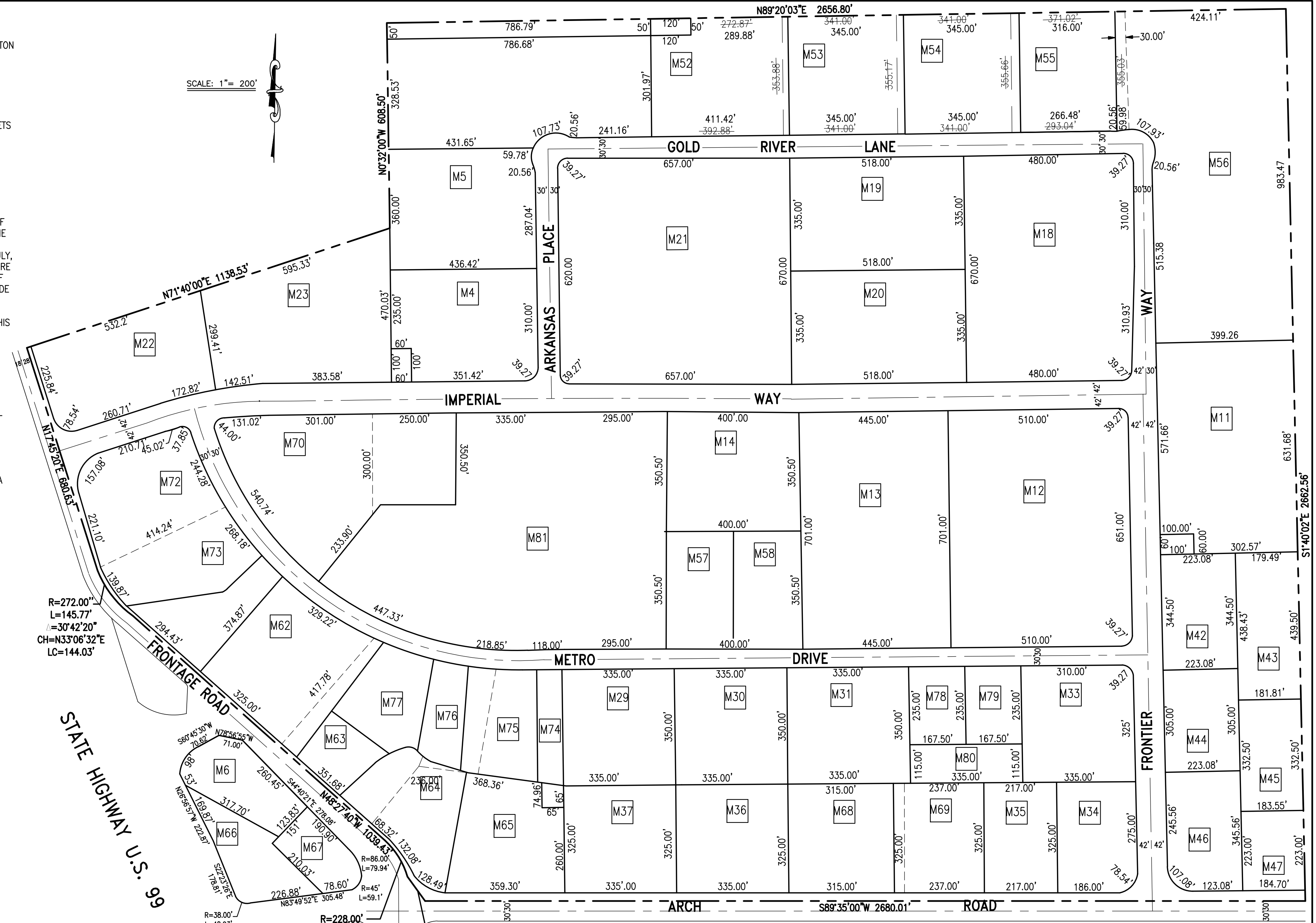
1. PARCELS SHOWN WITHIN THE ARCH ROAD INDUSTRIAL PARK STORM DRAIN DETENTION BASIN MAINTENANCE DISTRICT ARE FOUND IN THE SAN JOAQUIN COUNTY ASSESSOR'S BOOK 179, PAGES 25, 26, AND 48.
2. \_\_\_\_\_ DENOTES MAINTENANCE DISTRICT BOUNDARY.
3. BASIS OF BEARINGS: THE CENTERLINE OF ARCH ROAD BEARS SOUTH 89°35'00" WEST.
4. THIS MAINTENANCE DISTRICT CONTAINS 165.11 ACRES NET, MORE OR LESS.
5. [M7] DENOTES MAINTENANCE DISTRICT DIAGRAM DESIGNATION.

R=272.00'  
L=145.77'  
Δ=30°42'20"  
CH=N33°06'32"E  
LC=144.03'

R=228.00'  
L=131.85"  
Δ=33°08'03"  
CH=N31°53'30.5"W  
LC=130.02'

STATE HIGHWAY U.S. 99

SCALE: 1"= 200'



AMENDMENT NO. 9 TO MAINTENANCE DISTRICT DIAGRAM  
ARCH ROAD INDUSTRIAL PARK  
STORM DRAIN DETENTION BASIN MAINTENANCE DISTRICT

CITY OF STOCKTON, COUNTY OF SAN JOAQUIN, CALIFORNIA  
BEING A PORTION OF SECTION 60, C.M. WEBER GRANT AND A PORTION OF SEC. 28,  
T.1N. R.7E., M.D.B. & M., SAN JOAQUIN COUNTY, CALIFORNIA

MARCH, 2020

SHEET 1 OF 1

**SIEGFRIED**  
CIVIL ENGINEERING  
STRUCTURAL ENGINEERING  
SURVEYING  
PLANNING  
3428 Brookside Road, Stockton, California 95219  
209-943-2021 www.siegfriedeng.com Fx: 209-942-0214