



City Hall ● 425 N. El Dorado Street ● Stockton, CA 95202-1997 ● www.stocktongov.com

Meeting Summary

The following is a summary of the topics discussed in the FireStat meeting on 03/18/2021. Analysis is provided by the Office of Performance and Data Analytics. Information in the memo has been edited to protect Personal Identifiable Information (PII) and ensure accuracy. Note that the data and visuals included in this memo reflect a specific period in time, and as a result, information below can be subject to change.

This meeting will cover the following subjects in further detail:

CAD Implementation	2
Fire Prevention	2
Investigations.....	2
February 2021 Investigations Update	3
Calls for Service	3
February Overview	3
Personnel	6
Retirement	6
Fleet	6
Apparatus procurement:	6
Apparatus Usage:.....	7
Appendix 1	8
Appendix 2	9

CAD Implementation

The team continues to work towards implementation but has discovered a few bugs that require fixes before additional testing can occur. Central Square Technologies (CST) is working with AMR (VRECC) to install two upgrade packages in hopes of resolving some glitches on their side. Once both items have been addressed, both dispatch centers will need a couple of days to test the software to ensure stability and functionality.

Fire Prevention Investigations

The Fire Prevention Investigations Division has acquired BATS (Bomb, Arson, Reporting System) and has transitioned to this system for memorializing fire investigation reports. This robust program will also track the investigator's time management, assessing time on task and what tasks are being completed. As more information is inputted into this system, the Fire Prevention Division will be able to take a deep dive into the data looking for trends, investigative leads, and risks posed to the community.

While there were no investigations for "Vehicle" arsons there were 25 vehicle fires in February and 26 in January, needing additional follow up. Typically, these stem from vehicle theft and vehicle fires and are evaluated between PD or private insurance companies.

Question: How do we compare in terms of vehicle fires?

The Department will look at benchmarking arson against other agencies.

February 2021 Investigations Update

	Fire Investigations Determined To Be Arson	Fire Investigations Determined Not Arson	Fire Investigations Conducted:
Vehicle:	0	0	0
Vegetation:	0	0	4
Structures:	4	3	8
Outside Rubbish:	1	0	1

Year to Date Fire Investigations Conducted :106 (07/1/2020-12/2020)



February 2020	
Total Property Loss:	\$1,373,462
Total Content Loss:	\$121,900
Total Loss for the month:	\$1,495,362



Year-to-Date	
Total Property Loss:	\$2,760,912
Total Content Loss:	\$394,700
Total Loss for the Year:	\$3,155,612

(*YTD: Since January 2021*)

Number of arrests made for arson:

Year to date arrests made: 1

Next Arson Task Force Meeting:
Juvenile Fire Setter Contacts YTD: 1

Assistance

Stockton FIU Call Outs 0 DA Assistance 0 County FIU Call Outs 0 ATF Assistance 0

Note: Calculation for fire loss- Residential track \$150 sq. ft, Residential custom \$250 sq. ft.

Calls for Service

February Overview

Total Calls: 3,138

Total Responses Triggered: 4,032

Average Calls/Day: 112

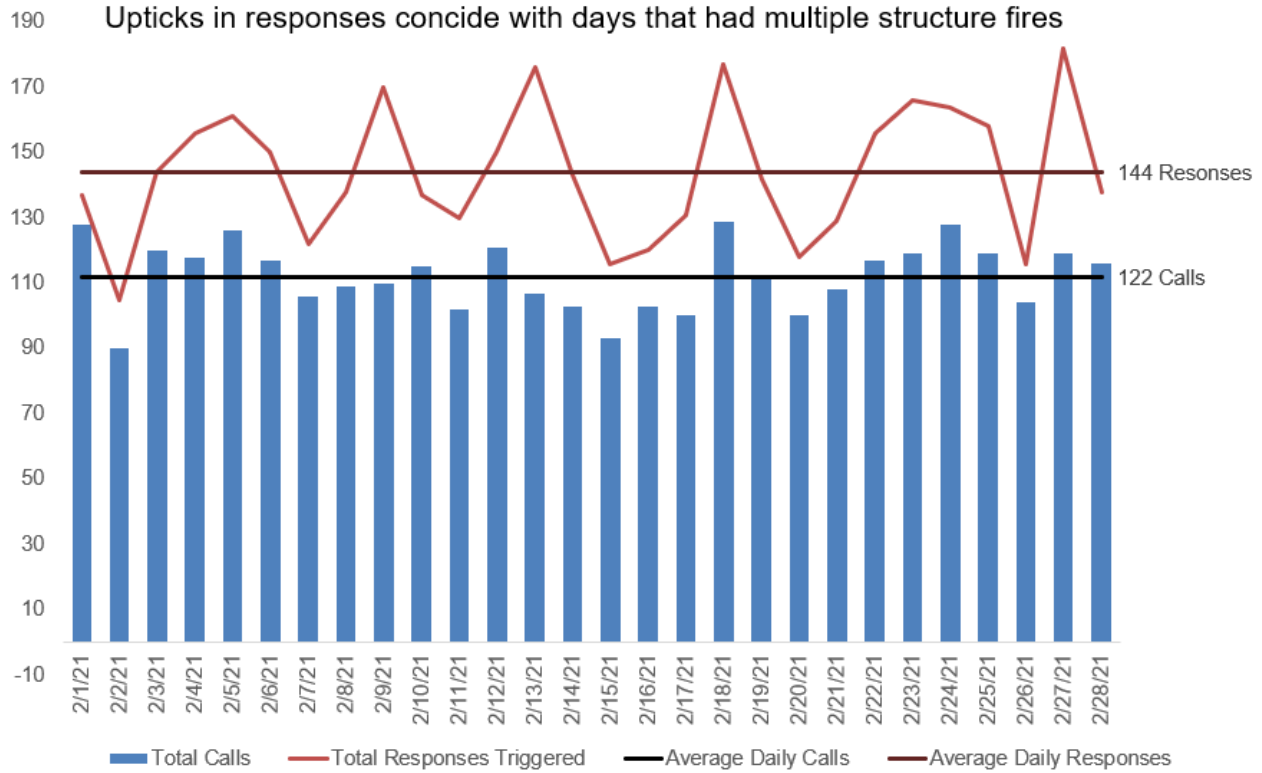
Average Responses Triggered/Day: 144

Busiest Day: Was February 18th with 129 calls and 177 responses including 4 structure fires.

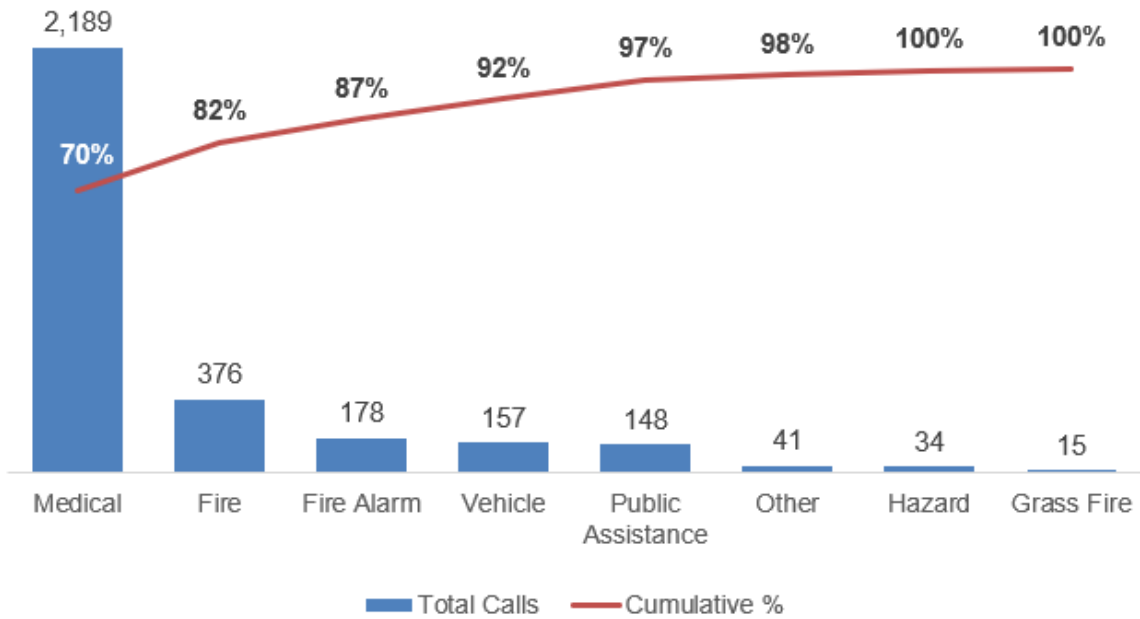
Feb 27th garnered the most responses with 182 responses for 119 calls also including 4 structure fires. 47 structure fires reported in February. Additionally, Collision w/Person Trapped which garners a higher response rates with 114 Responses to the 28 calls made in February.

Typically, cities see about 4 structure fires a month.

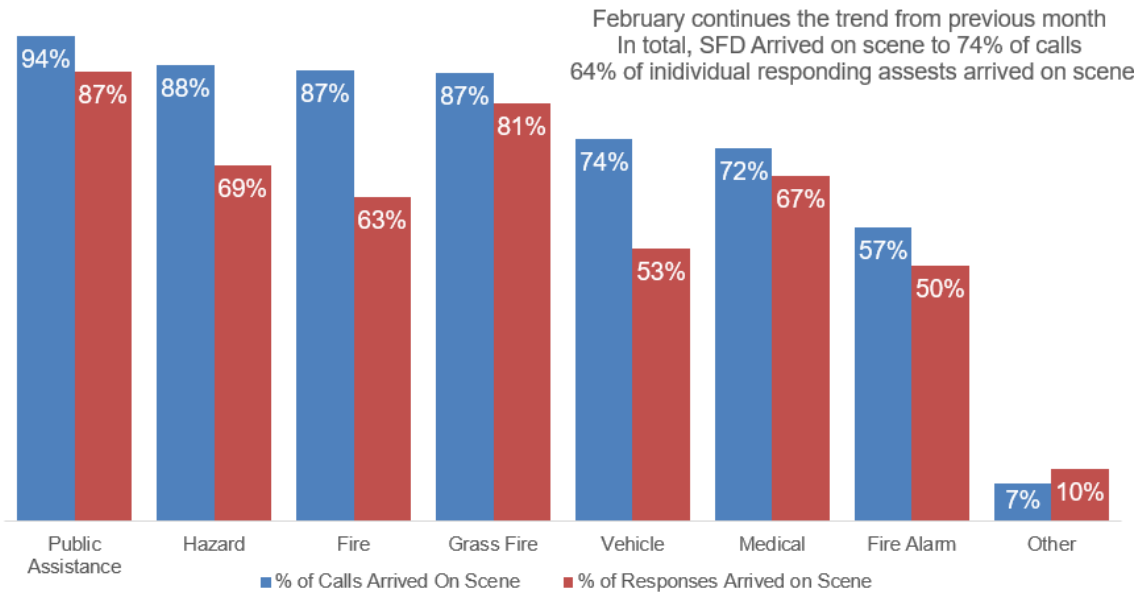
SFD Responded to 3,138 calls with 4032 assests in February 2021
 Upticks in responses coincide with days that had multiple structure fires



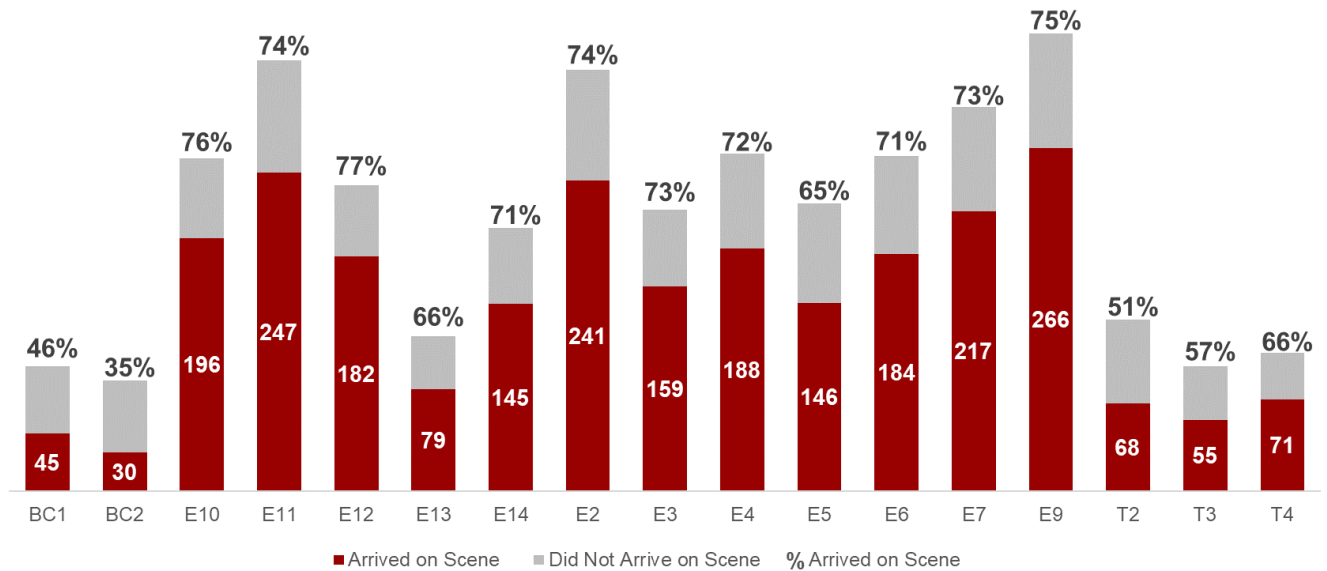
70% of calls to SFD were medical in nature



Total Calls with Arrivals on Scene: 2310
 Total Responses Triggered that Arrived on Scene: 2587



Of Companies that Turnout (Dispatched to Enroute), Engines Arrive On-Scene more frequently



The Department explains the truck companies contain the jaws of life. When there is a collision, two engines will arrive and a truck and battalion chief. The company is dispatched to stretch a hose line and utilize the jaws of life. Engines who arrive first may see no one is trapped and there is not a need for the jaws of life so these companies (the trucks) will be cancelled at a higher frequency. We send two truck companies depending on the fire.

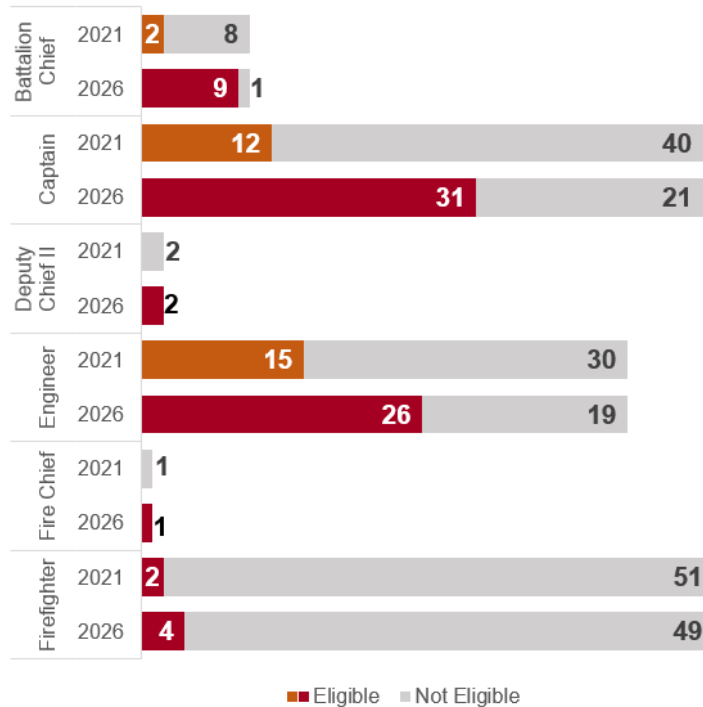
Note that which units respond are national standards meaning units must respond to certain types of calls. This means responding units are out of the department's control.

Personnel

Retirement

- 25.82% of the department is over 20 years of service.
- 23.79 years of service is the average for retirement. (based on recent retirements going back to 2017)

A MAJORITY OF BATTALION CHIEF, CAPTAINS, AND ENGINEERS WILL BE ELIGIBLE TO RETIRE WITHIN THE NEXT 5 YEARS



Battalion Chiefs		
	Years of Service	Age
Average	22	49
Range	16-28	43-58
Captain		
	Years of Service	Age
Average	20	46
Range	13-29	35-61
Deputy Chief II		
	Years of Service	Age
Average	~	~
Range	~	~
Engineers		
	Years of Service	Age
Average	17	47
Range	4-26	30-61
Fire Chief		
	Years of Service	Age
Average	~	~
Range	~	~
Firefighters		
	Years of Service	Age
Average	4	33
Range	0-23	23-56

Deputy Chief and Fire Chief Year of Service and Age omitted due to smaller sample. (PII)

Fleet

Apparatus procurement:

- Apparatus Committee
 - Reaching out to fire departments to assess what they are currently using.
 - Researching what their replacement cycle is
 - Currently reaching out to vendors to get information on Fire Apparatus.
- Ongoing meetings with Public Works are discussing apparatus needs and replacement.
 - 2 Fire Engines over 20 years old
 - 2 Fire Engines close to 20 years old (2003, 2004)
 - 2 Fire Engines with over ½ million miles (both are 2016)
 - The engines with low hours and low miles have had the odometer or hour meter replaced.
 - It takes approximately 18 months to purchase a new fire engine

Apparatus Usage:



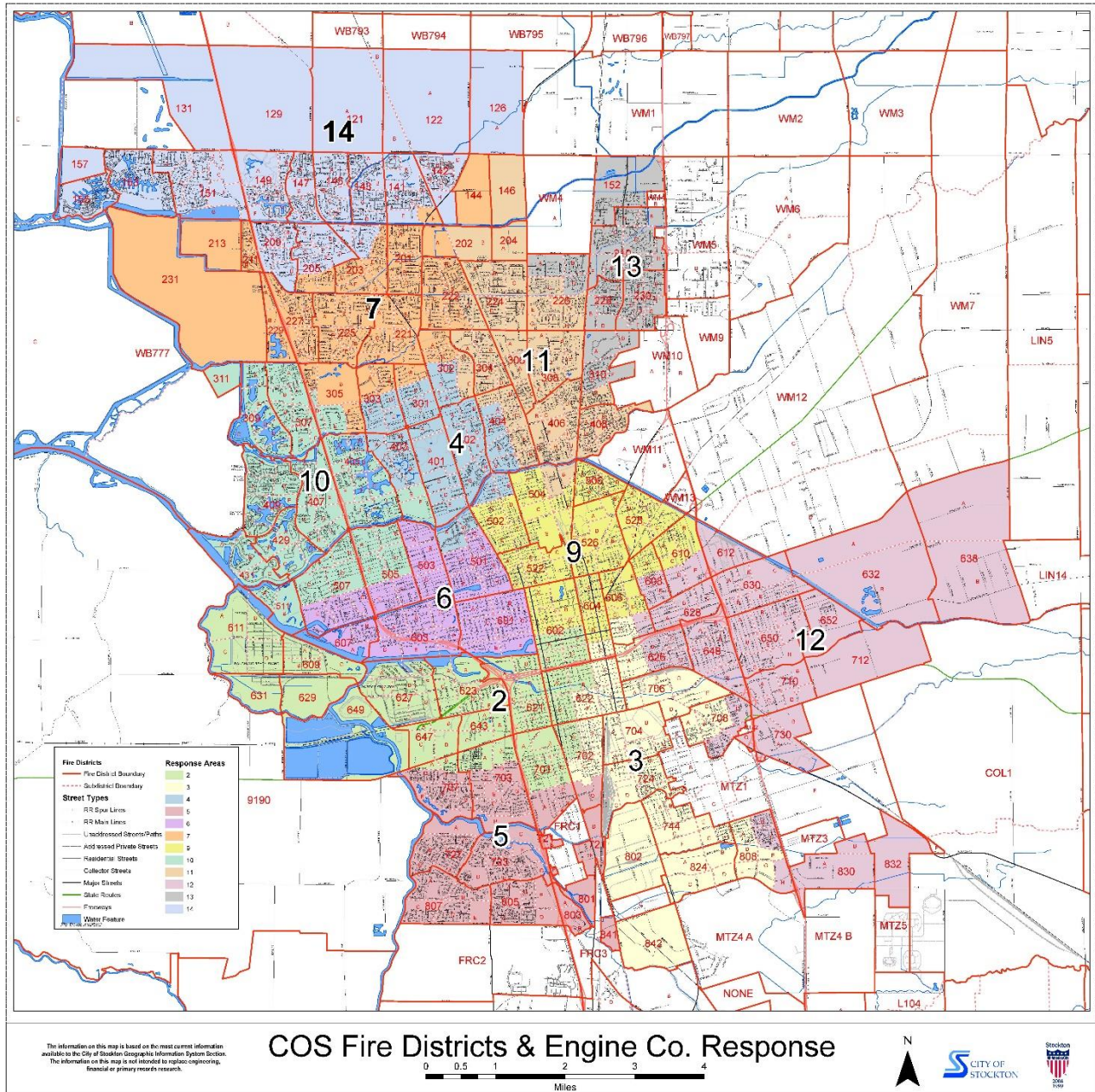
Note: Out of Service refers to following categories: In Reserve Capacity, Out of Service, PMI, Repairs, Vehicle Accident.

- A majority of the Apparatuses within Fire will be out of service at least once in the month.
- T5 and E22 have been out of service both January and February. T6 was out of service all of January and within a few days into February was back to out of service.
- E2, E9, E13, E14, HZMT3, T4, WR6 have been only apparatuses in service all January and February.
- E17, E18, E19, E20, E21, E22, T5, T6, T7 are Reserve Apparatuses.
 - In January, 5 out of the 9 reserve apparatuses were put in service at least one day in February.
 - T7 was In Service every day in January.
 - In February, 7 out of the 9 reserve apparatuses were put in service at least one day in February.
 - E21 was In Service every day in February.

Appendix 1

Map with fire reporting districts that has station locations.

- Company 2, 3, and 4 have engines and trucks.
- Company 2 and 4 have a Battalion Chief.
- Company 2 has the Chiefs Operator.
- All others have an engine company
- Company 2 is a heavy rescue.
- Company 3 is HazMat.
- Company 6 is water rescue.



Appendix 2

Fire Fleet Information

Unit ID	Year	Age	Mileage	Hours	Status	In Service
T5	1988	33	146,718	4,446	Reserve	5%
T7	1994	27	193,116	11,862	Reserve	36%
E17	2000	21	235,600	19,561	Reserve	51%
E22	2000	21	7,736	11,862	Reserve	40%
E19	2003	18	171,000	4,056	Reserve	27%
E20	2004	17	60,753	1,841	Reserve	46%
T3	2005	16	101,707	9,112	Apparatus	82%
E18	2005	16	544,632	16,504	Reserve	34%
E21	2005	16	534,930	16,210	Reserve	57%
T6	2005	16	288,354	8,738	N/A	N/A
Rsc2	2009	12	141,504	4,288	N/A	N/A
E5	2013	8	64,190	6,252	Front Line	86%
E6	2013	8	305,415	9,255	Front Line	72%
E7	2013	8	7,803	5,265	Front Line	62%
E10	2013	8	245,784	7,448	Front Line	75%
E13	2013	8	211,068	6,396	Front Line	88%
E14	2013	8	215,754	6,538	Front Line	64%
E3	2016	5	163,812	4,964	Front Line	86%
T4	2016	5	95,898	2,906	Front Line	86%
E9	2016	5	219,054	6,638	Front Line	73%
E11	2016	5	218,460	6,620	Front Line	79%
E12	2016	5	169,752	5,144	Front Line	81%
HZMT3	2016	5	12,771	387	N/A	N/A
E2	2018	3	93,225	2,825	Front Line	83%
T2	2018	3	54,318	1,646	Front Line	80%
E4	2018	3	77,649	2,353	Front Line	88%